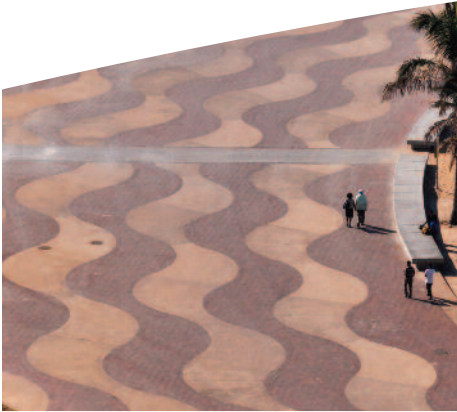


Artevia

THE ART OF CONCRETE



ARTEVIA™

Artevia™ Colour
Is a collection of
coloured concretes in a
broad palette of tones

APPLICATIONS

- Environmentally-attractive pathways for parks
- Swimming pool surrounds
- Enhancement of architectural features
- Highlighting of demarcation zones
- Precast elements
- Building facades, Floors (industrial, domestic, retail outlets)

ADVANTAGES

- Full Integral through colour
- Gives a long lasting and fade resistant inbuilt decorative solution
- Range of colours and finishes available
- A range of proprietary mixes available
- Fully Automated batching to ensure colour consistency
- Cost-effective with very low maintenance
- Long lasting and UV-resistant
- Available across Qatar from selected Readymix plants

Coloured concrete is a versatile building and construction material with a range of colours and finishes available.

Artevia™ mixes can be specified for use with almost any concrete and are suitable for most applications including domestic, structural and precast. These are all designed at optimum fines content, allowing for a superior blend of coloured concrete.

Placing and finishing

Artevia™ Colour is applied the same way as any other concrete. However, the objective is to obtain a high quality decorative finish and this requires extra attention to placing and finishing techniques.

Compromises on any of the placement stages could spoil the final appearance of Artevia™ Colour.

Finishing consistency brings handsome rewards in quality-coloured concrete. The wide variety of Artevia™ Colour finishes, backed by good craftsmanship, will command a premium on the markets.

A brushed, rotary or textured finish will produce optimum colour uniformity.

A very-hard, dark, smooth finish is obtained by extended trowelling.

Do not fog/sprinkle the coloured concrete with water. Do not add water to tools or brushes as adding water will discolour the surface.

Saw cut joints must be made as soon as possible to prevent cracks, but care must be taken not to damage the edges.

Curing is one of the most important and often neglected processes in quality concrete construction. General good practice points:

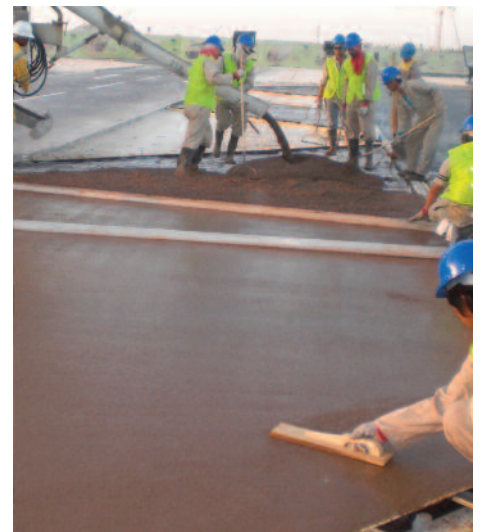
- All colour-pigmented concrete must be cured. The colour of the concrete is normally less uniform and appears darker than the final colour during the curing process.
- Cure evenly and sufficiently. Poor curing contributes to shrinkage cracks, dusting and surface deterioration.
- Protect the concrete surface from traffic during the curing period.

Recommendations

Finishing with steel power trowel blades can leave undesirable dark burnish marks which can discolour the surface. Finishing techniques should be undertaken by trained and competent persons to achieve the desirable finish. The use of polypropylene fibre in the mix design improves resistance and reduces surface cracking. The sealer should be applied to the dry concrete surface using a roller, spray or brush.

Artevia™ Colour fully complies with Qatar Construction Specifications. **MS DS** available on request.

Consult Readymix Qatar Technical Centre for specialized applications and mix designs at technicalcentre@rmg-readymixqatar.com.qa



GENERAL GUIDELINES

ARTEVIA™ APPLICATION is available and undertaken by Readymix Qatar who have a network of certified applicators who will place and finish all products from the Artevia range. This allows us to control both material and workmanship to achieve maximum quality.

Effects on Colour

- The concrete will be delivered in uniform consistency; it is advisable not to add water on site as this will have an impact on colour.
- Correct workability for your chosen

application must be ordered.

- Variation in finishing techniques can affect colour, please ensure consistency in placing and finishing the product.
- Poor curing of Artevia™ Colour can lead to lighter colours or shading variations.

Colour chart and choice of aggregate chart are available upon request.

Ensure an appropriate floor thickness according to the application.

Points to remember

Do not in any case add water or additives to the concrete on site. Do not pour concrete if there is a risk of rain or high temperatures. Protect access to the site during the hardening period of concrete. Always cure and seal the concrete surface using our recommended curing and finishing materials. Respect the rules of Occupational Health and Safety: wear gloves, helmet, shoes, safety glasses etc.



Readymix Qatar L.L.C
P.O. Box 5007, Doha-Qatar
Tel: +974- 44341798 /44341796 /44536608
Website: www.readymixqatar.com.qa

 A member of
LafargeHolcim